

A person wearing a bright yellow raincoat is seen from behind, looking out over a scenic landscape. The landscape features a winding asphalt road that curves through a valley with green vegetation and some rocky patches. The sky is overcast and grey. The person is standing on a rocky outcrop in the foreground.

Chile y sus perspectivas económicas. ¿Cómo salir de la trampa del ingreso medio?

Fedefruta, 23 agosto de 2023

Ignacio Briones. UAI, Horizontal y Ex Ministro de Hacienda

Agenda

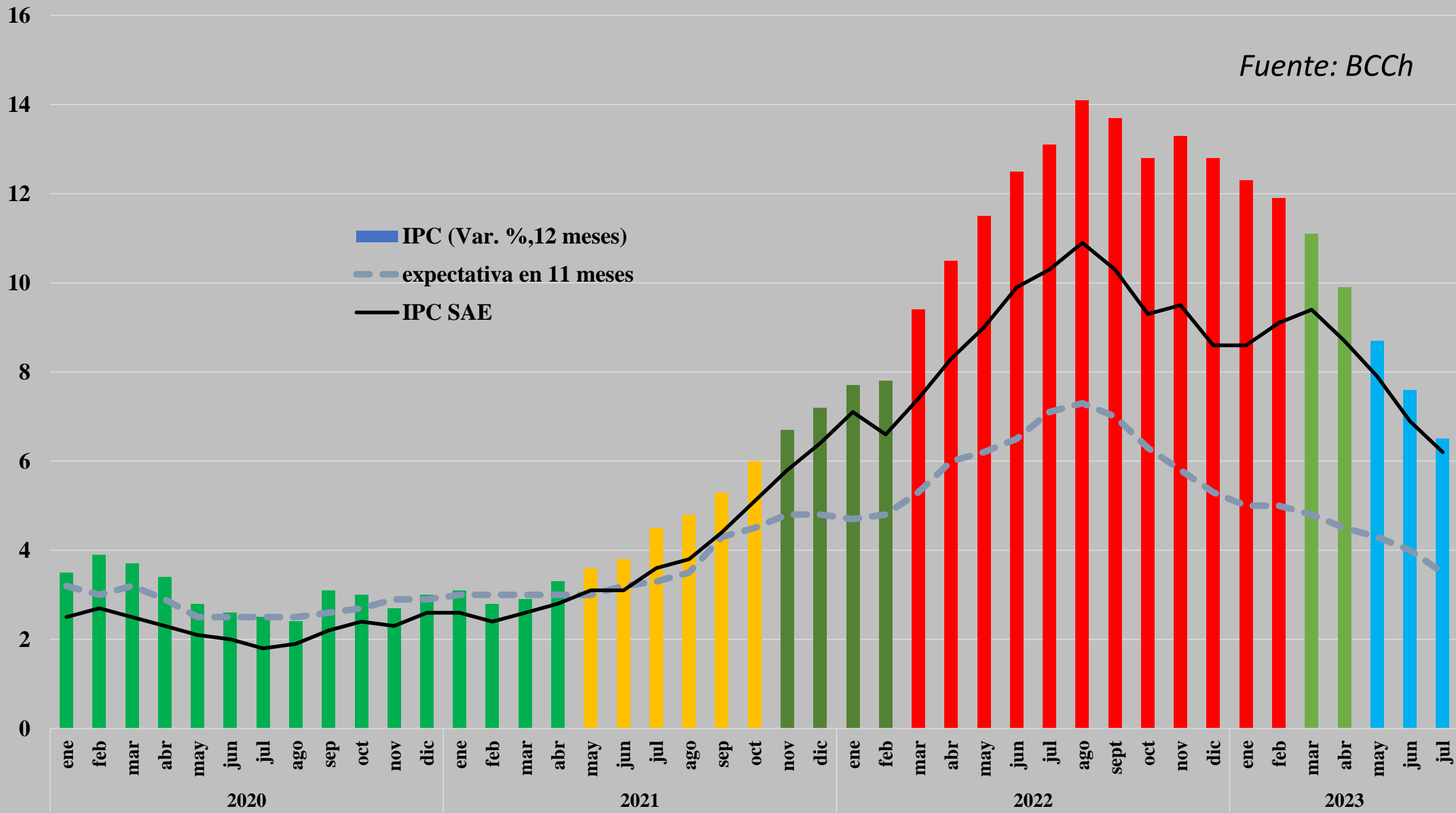
- 1- El momento económico chileno y perspectivas 2023-24
- 2. Economía internacional y focos de riesgo
- 3- ¿Chile en la trampa de los países de ingreso medio? Una mirada al futuro

A construction worker wearing a green hard hat, a high-visibility yellow vest over a white long-sleeved shirt, and work gloves is working on a rebar structure. The worker is positioned on a wooden formwork, and several vertical rebar rods are visible against a clear blue sky. The scene is brightly lit, suggesting a sunny day.

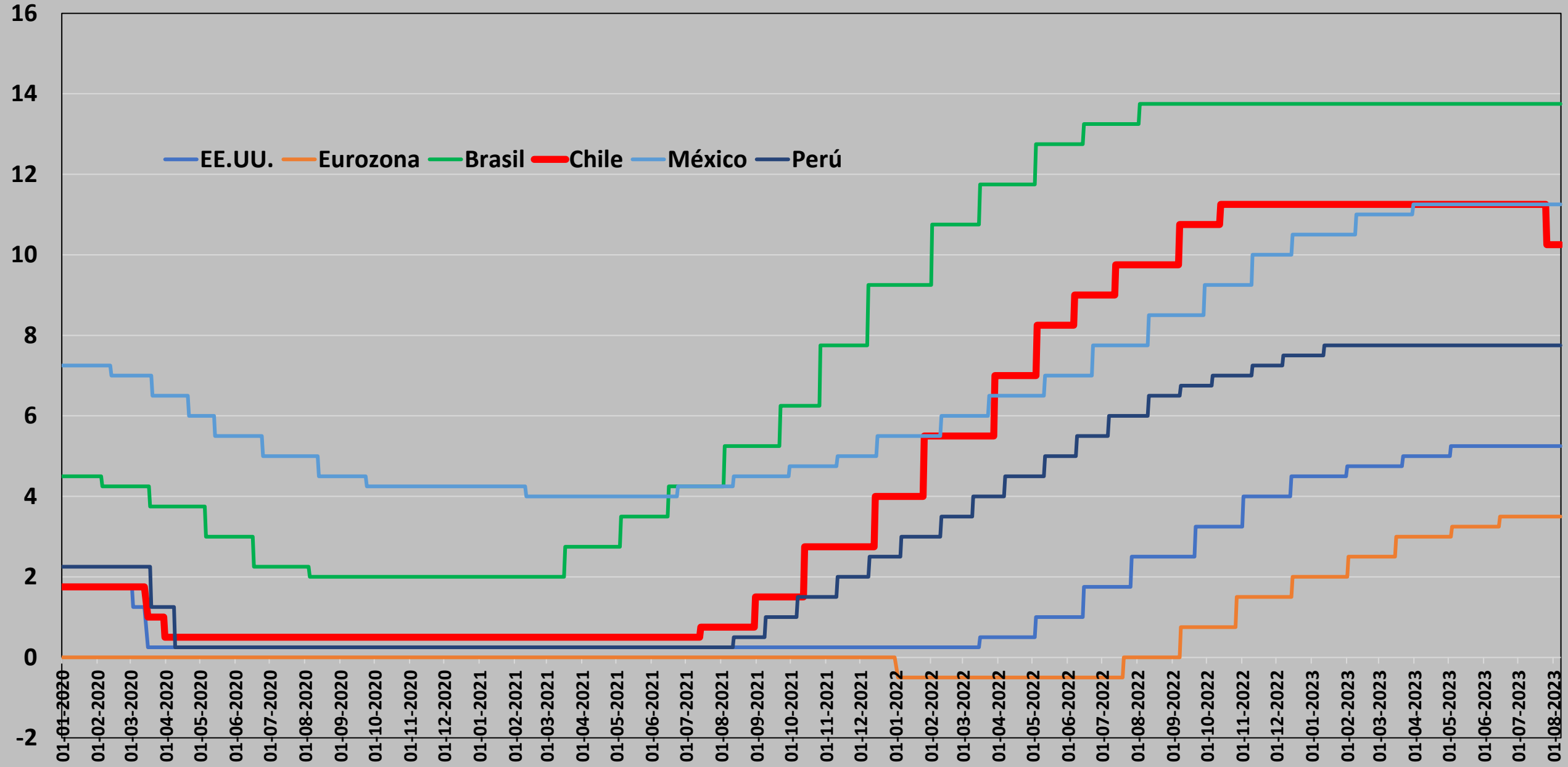
1-Economía chilena y perspectivas

Expectativas y medidas de inflación 12 meses (%)

Fuente: BCCh

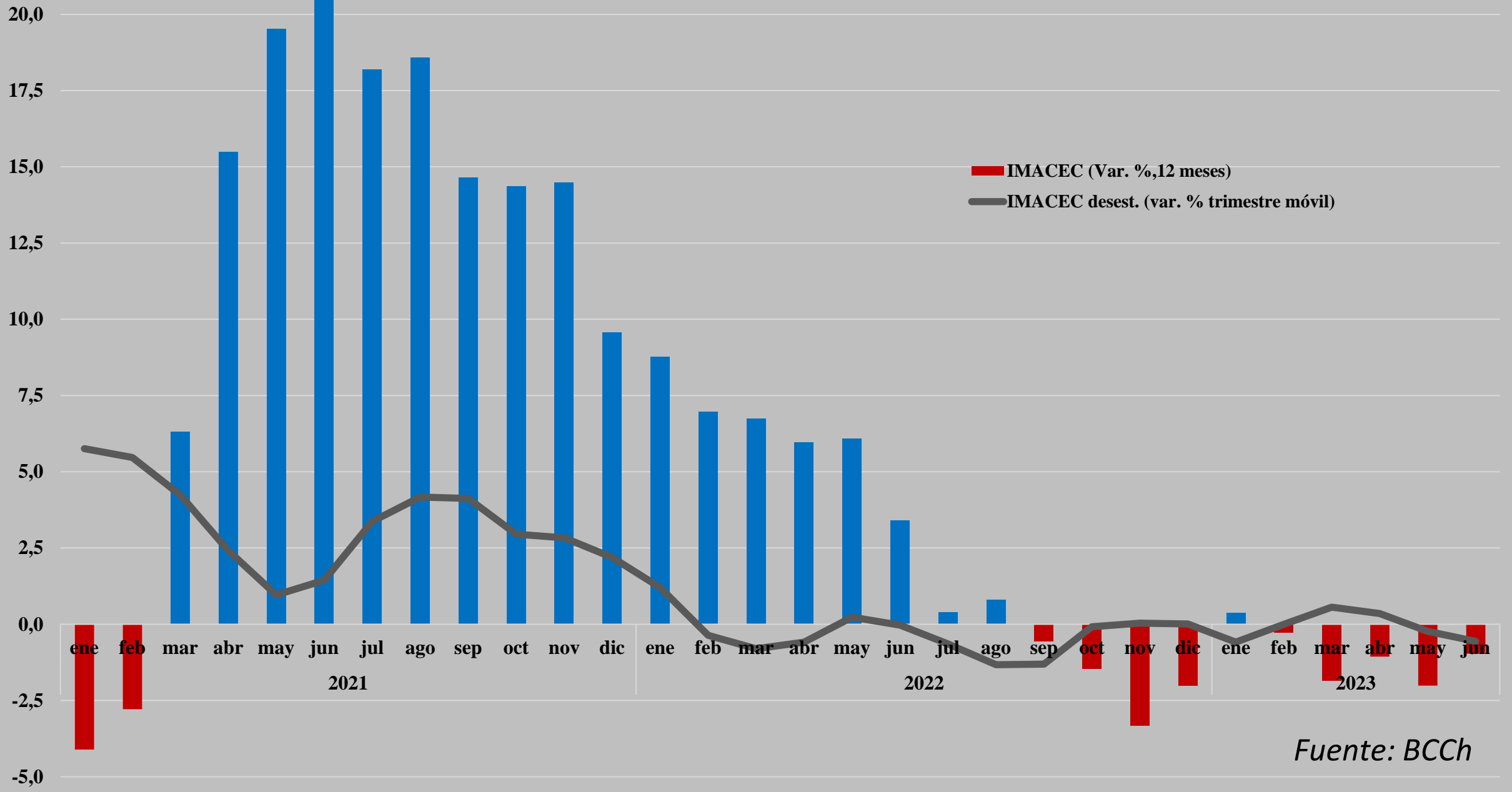


Evolución Tasas de Política Monetaria



Fuente: Bloomberg y BCCh

IMACEC (var.%, 12m.)

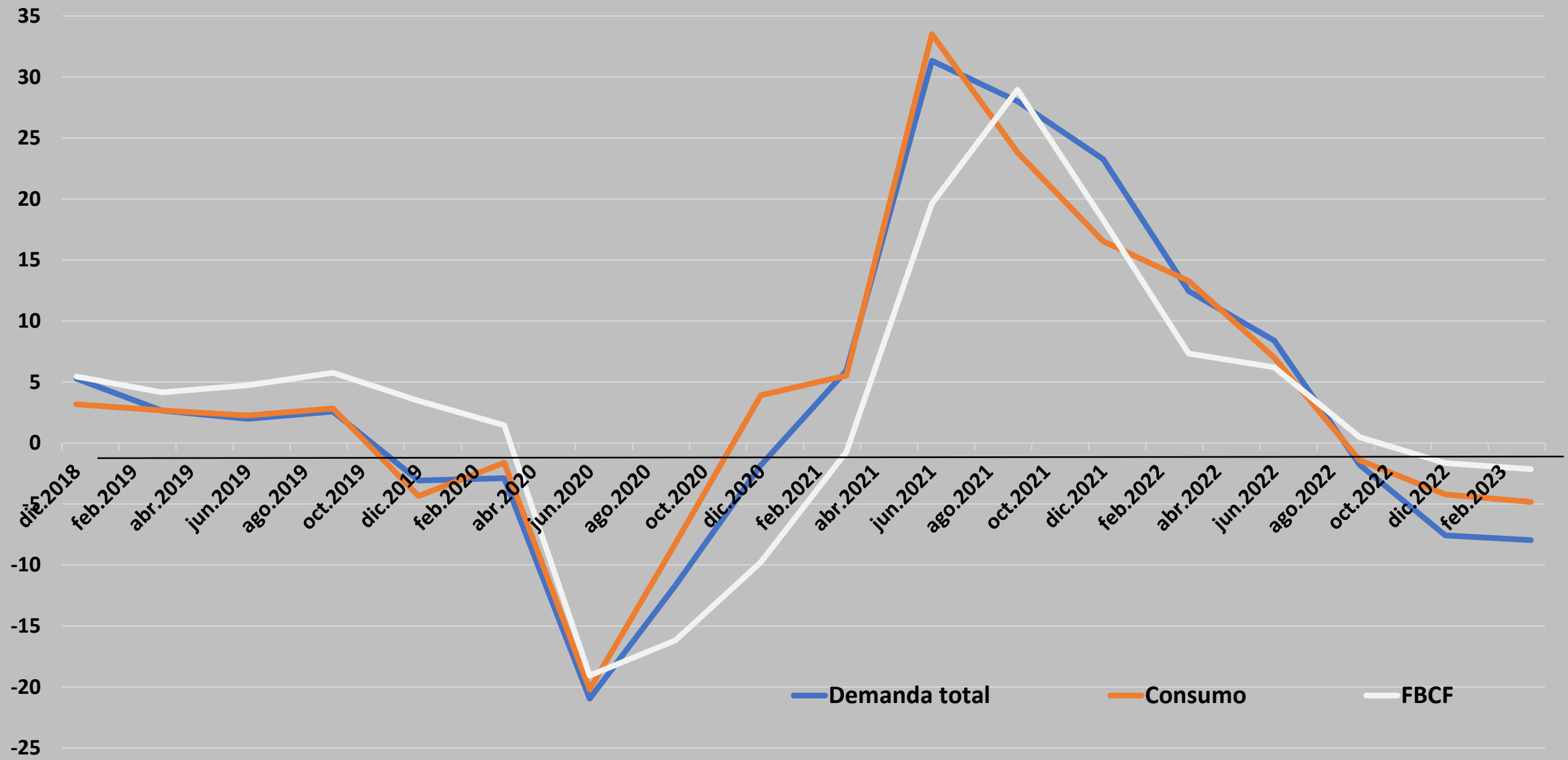


Fuente: BCCh

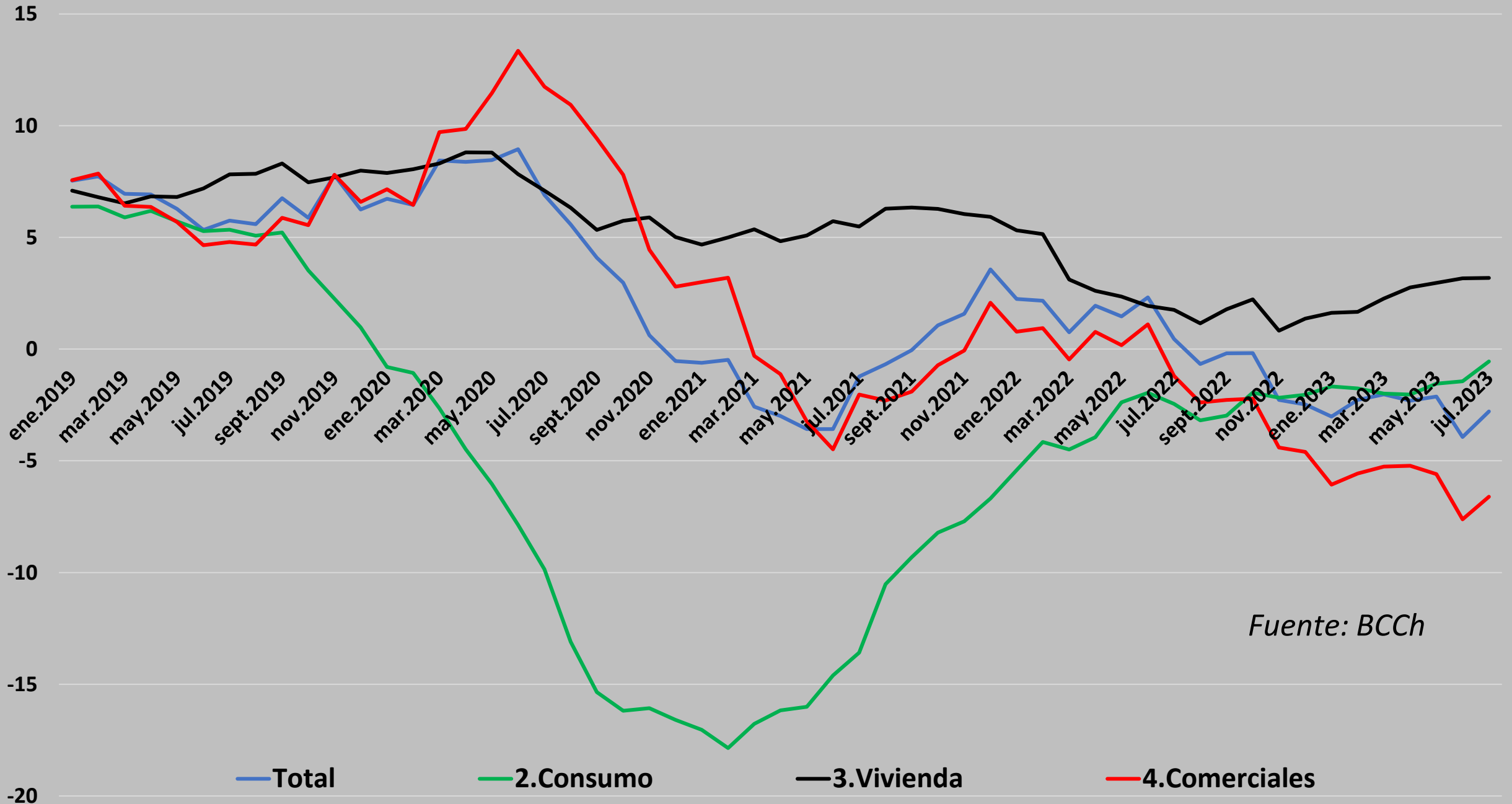
Variables económicas fundamentales

- Crecimiento 2023: -0,5%
- Crecimiento 2024: 1,5%
- Consumo privado 2023:-4,9%
- Consumo privado 2024:1,5%
- Inversión 2023:-3%
- Inversión 2024:-1%

Variación %12 meses, Demanda Interna y componentes

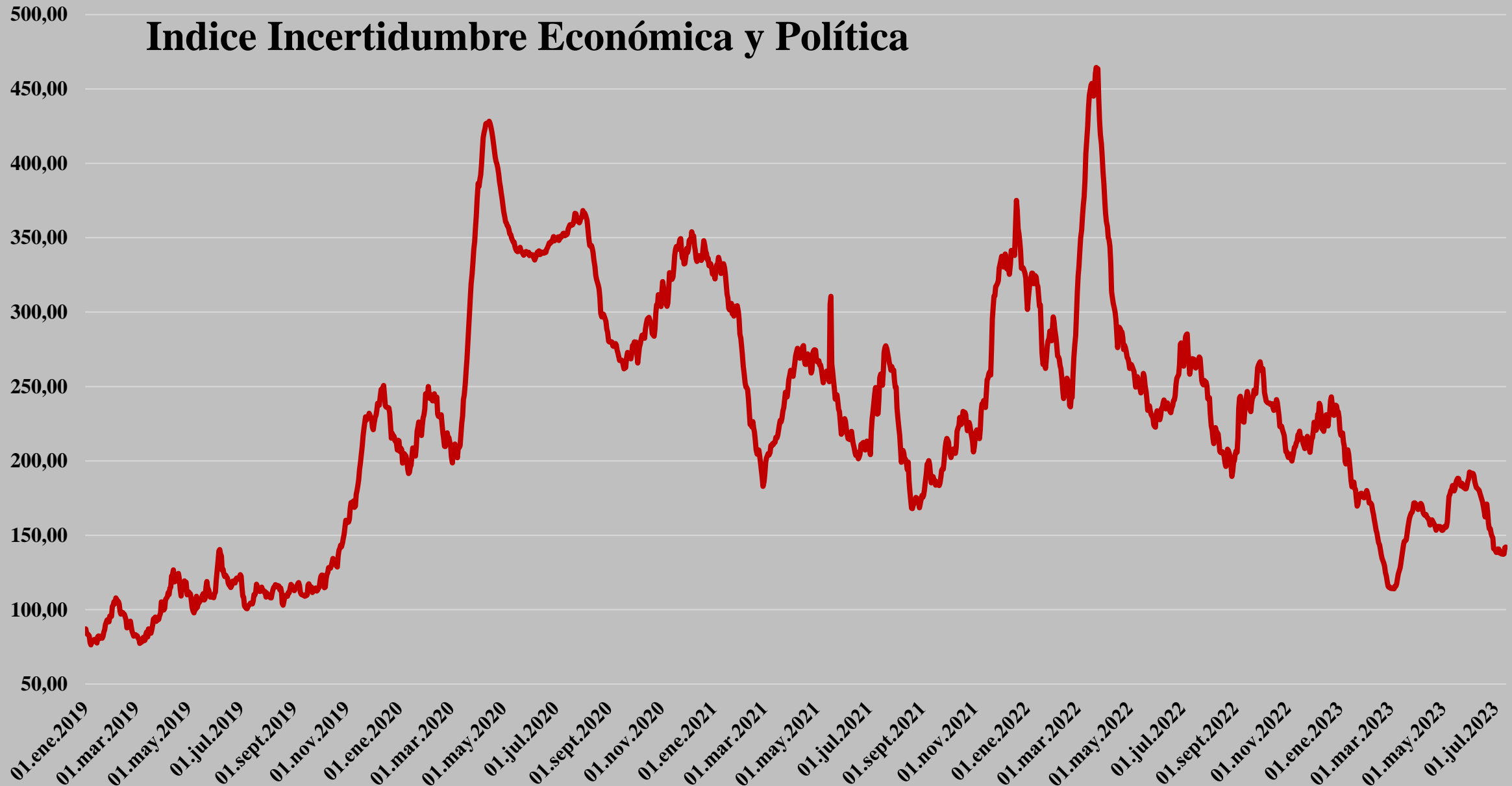


Variación real (12 m)colocaciones bancarias



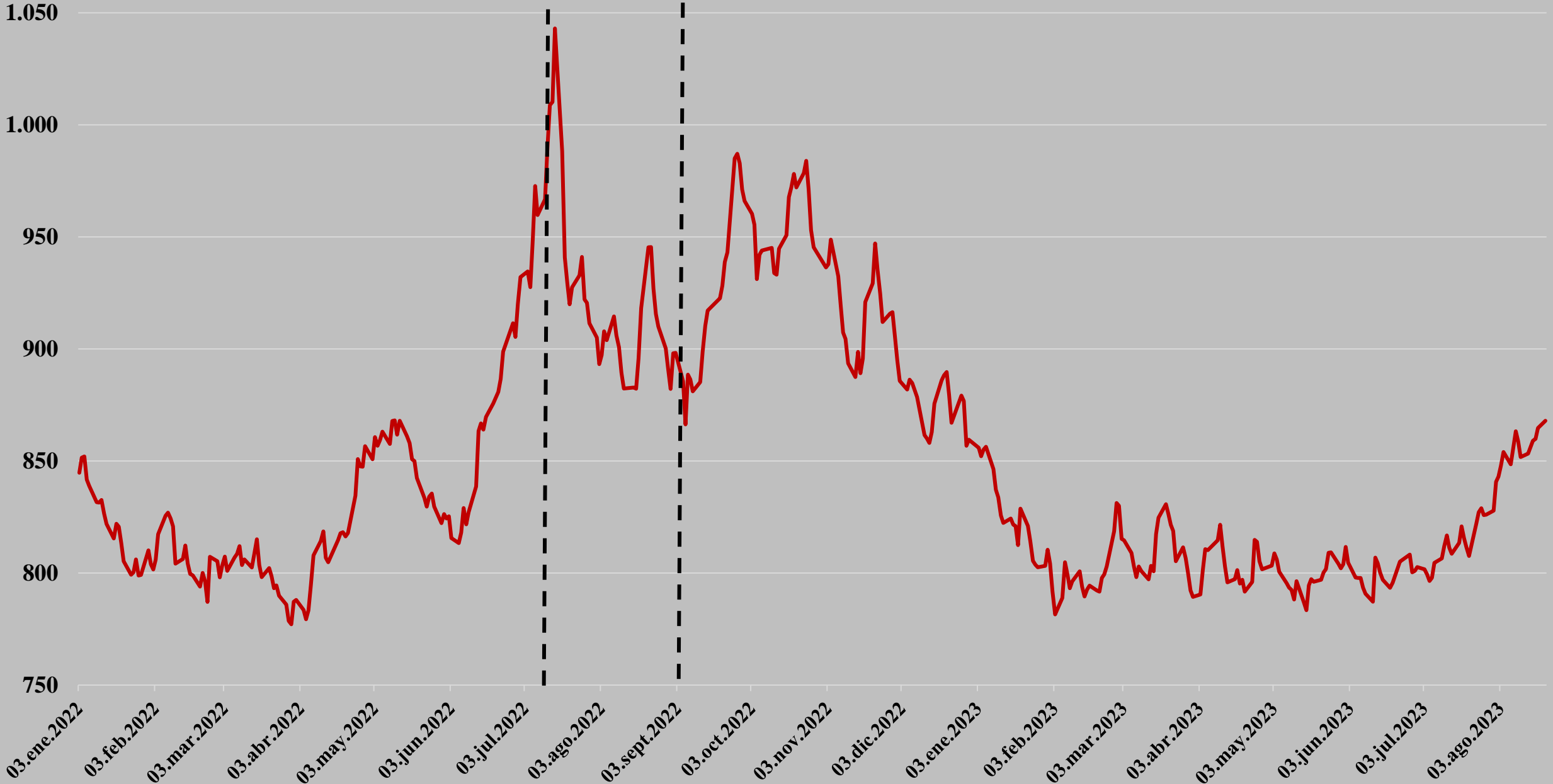
Fuente: BCCh

Indice Incertidumbre Económica y Política



Fuente: BCCh

Tipo de cambio Nominal Diario

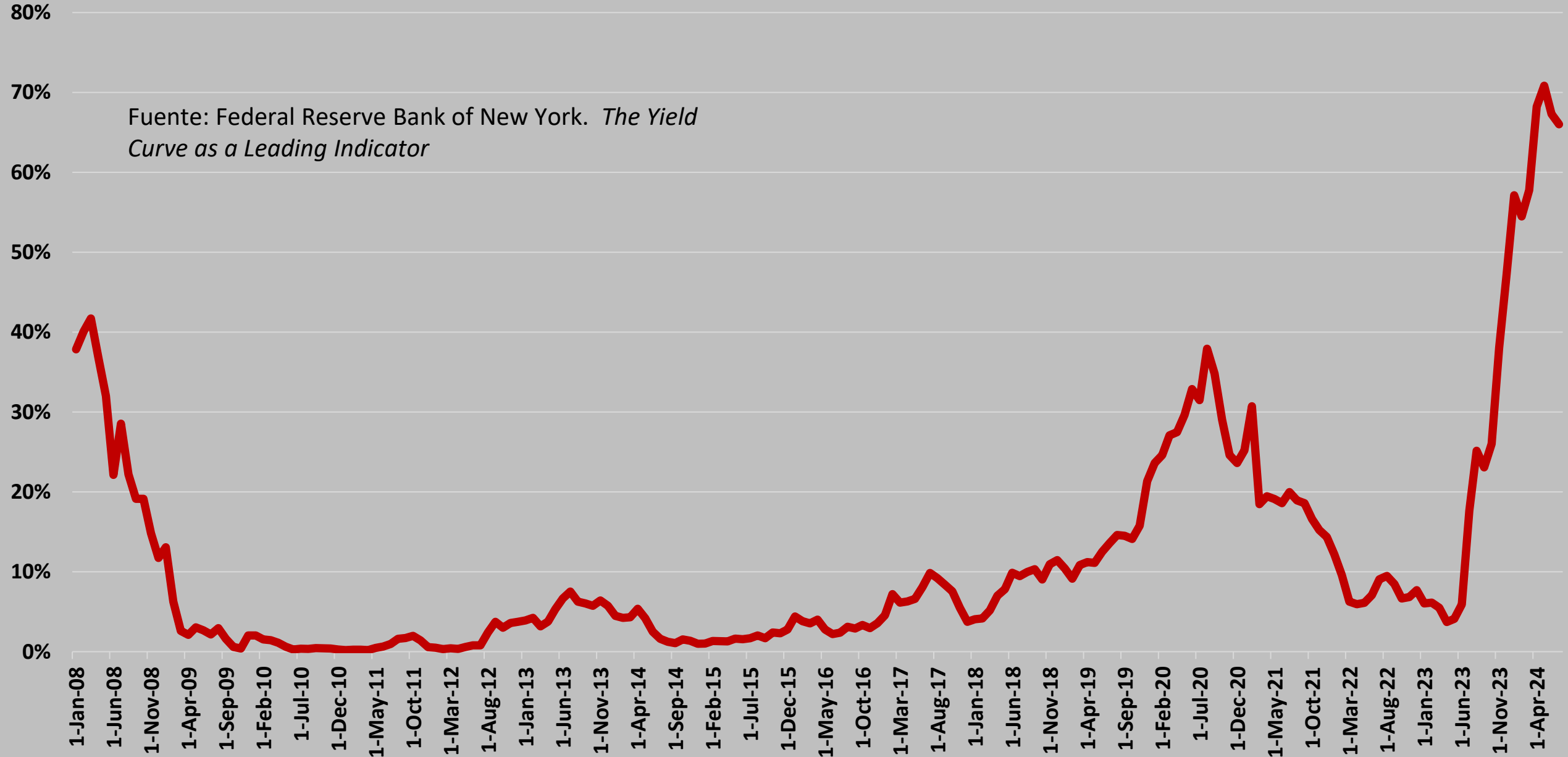




2. Economía internacional

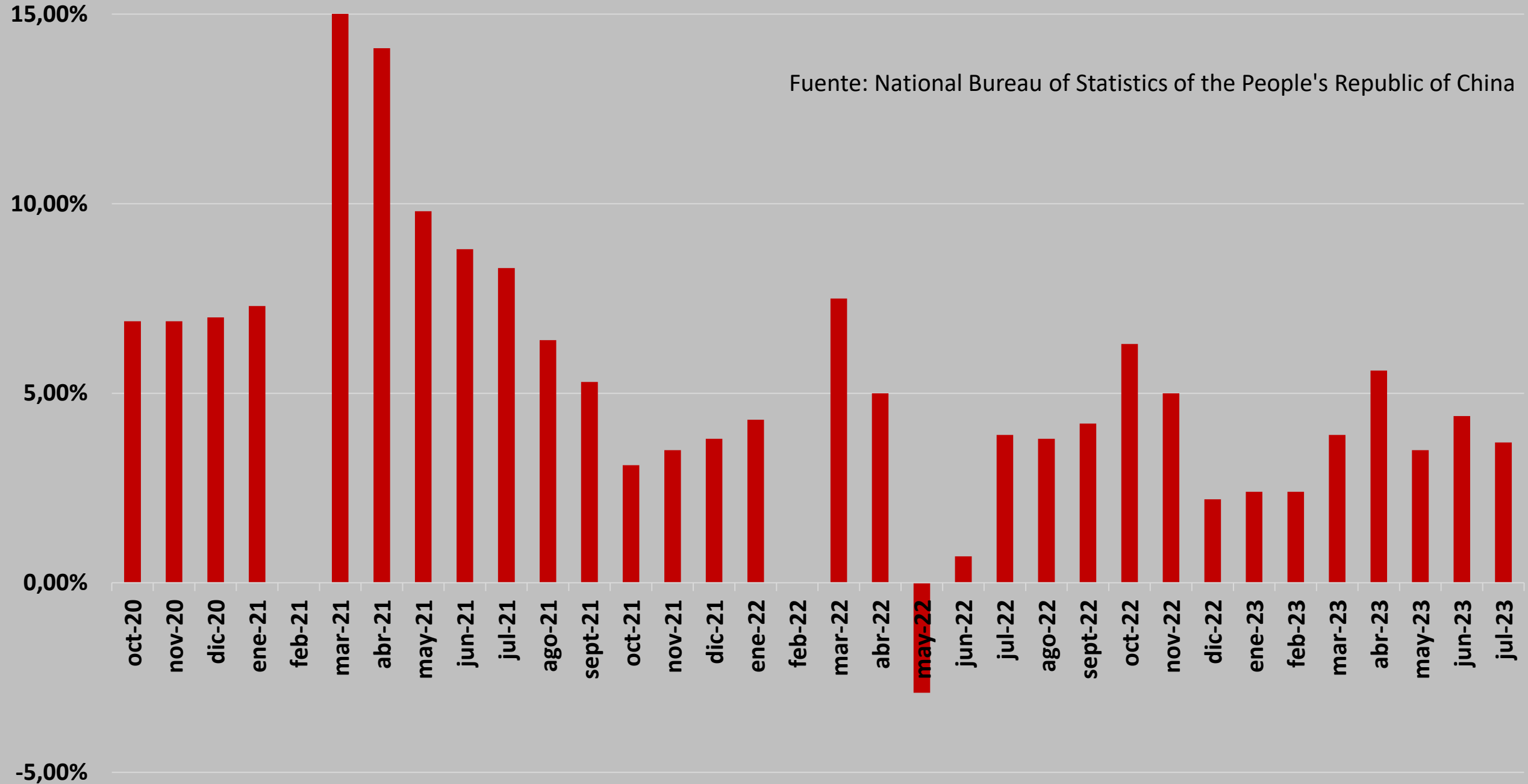
Probabilidad de Recesión EE.UU. Próximos 12 meses

Fuente: Federal Reserve Bank of New York. *The Yield Curve as a Leading Indicator*

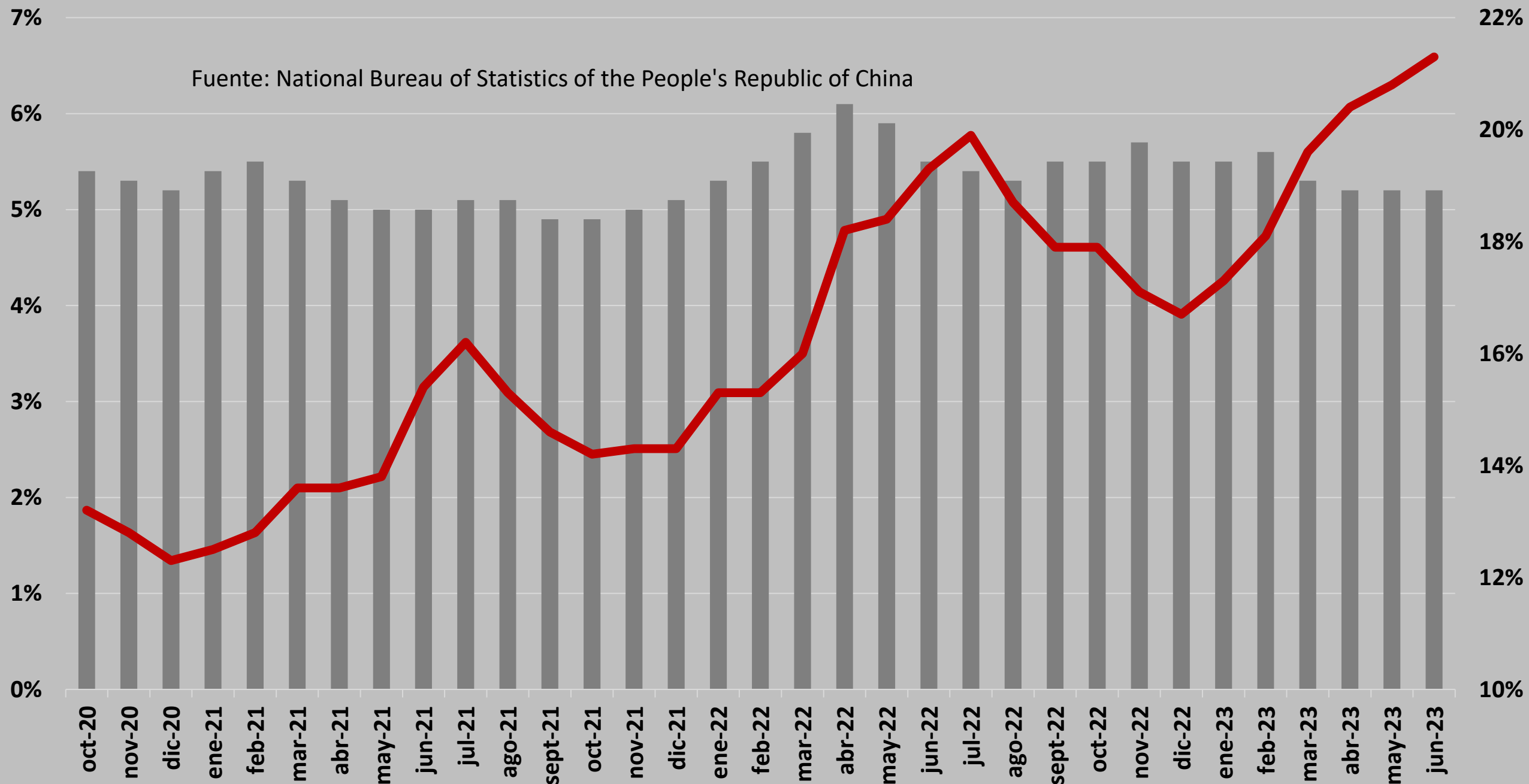


China: Prod. Industrial (var %, 12m)

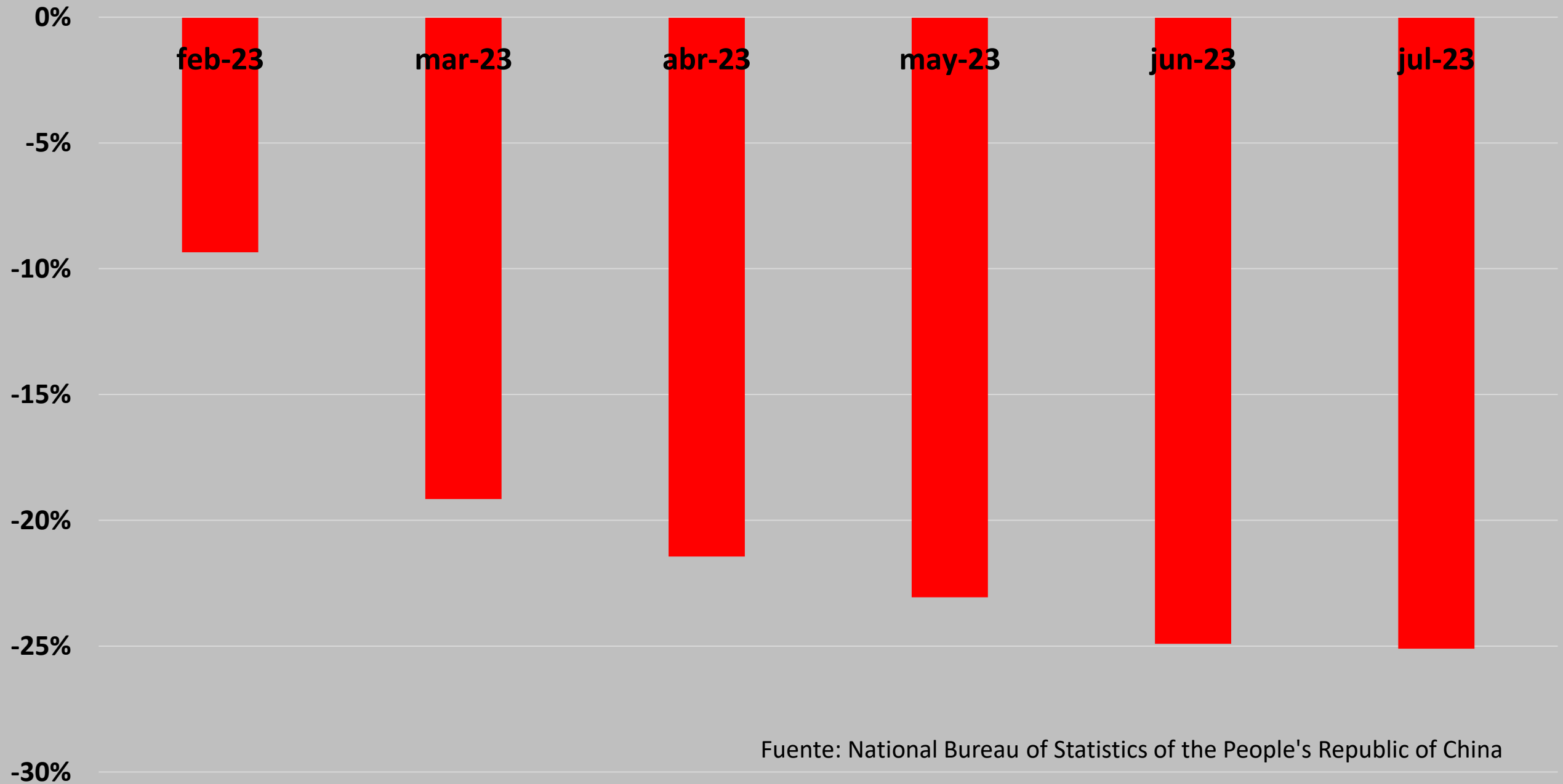
Fuente: National Bureau of Statistics of the People's Republic of China



China: Desempleo total y joven (16-24, %)



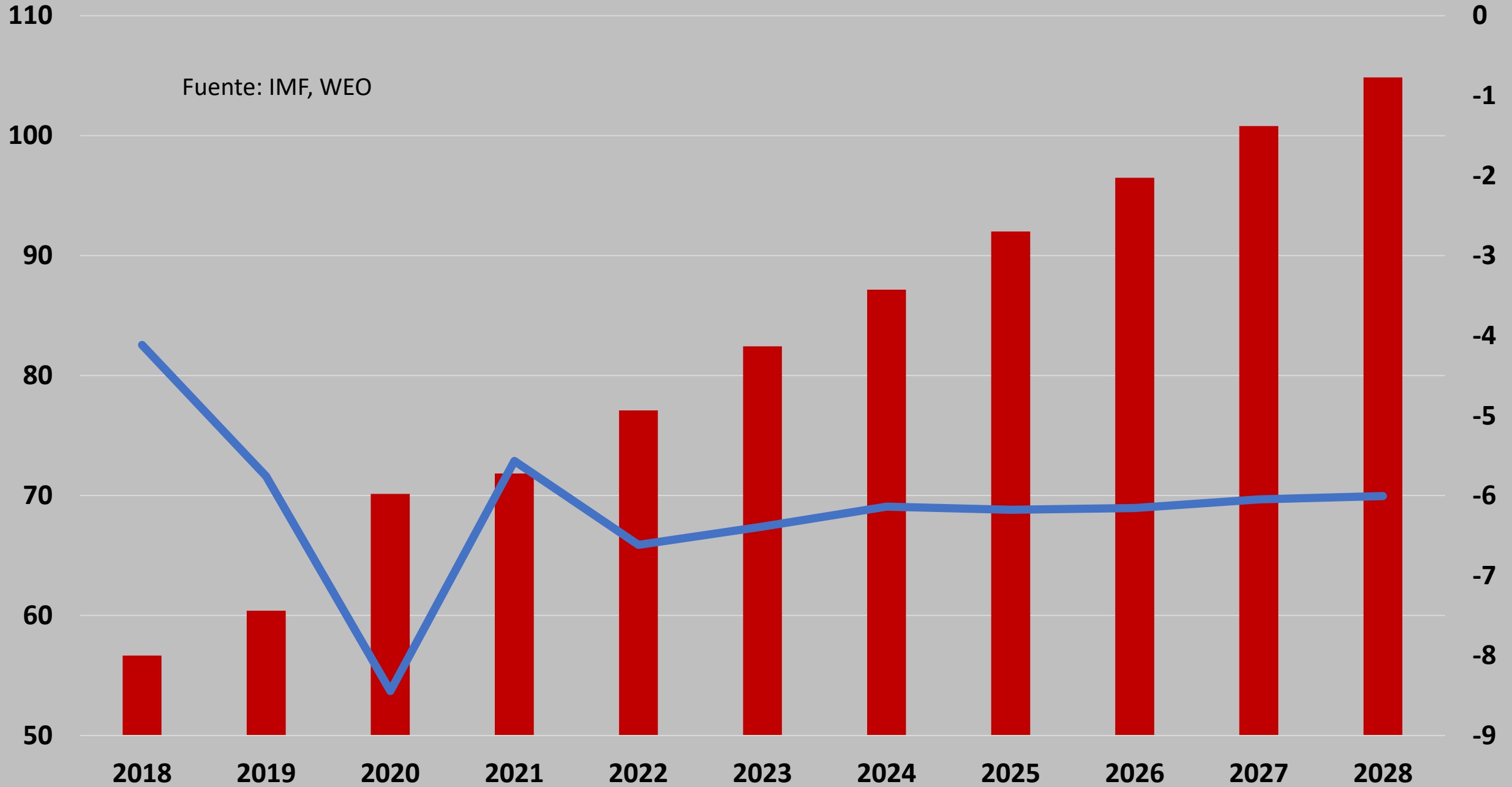
Nuevas construcciones de vivienda (var. % 12m)



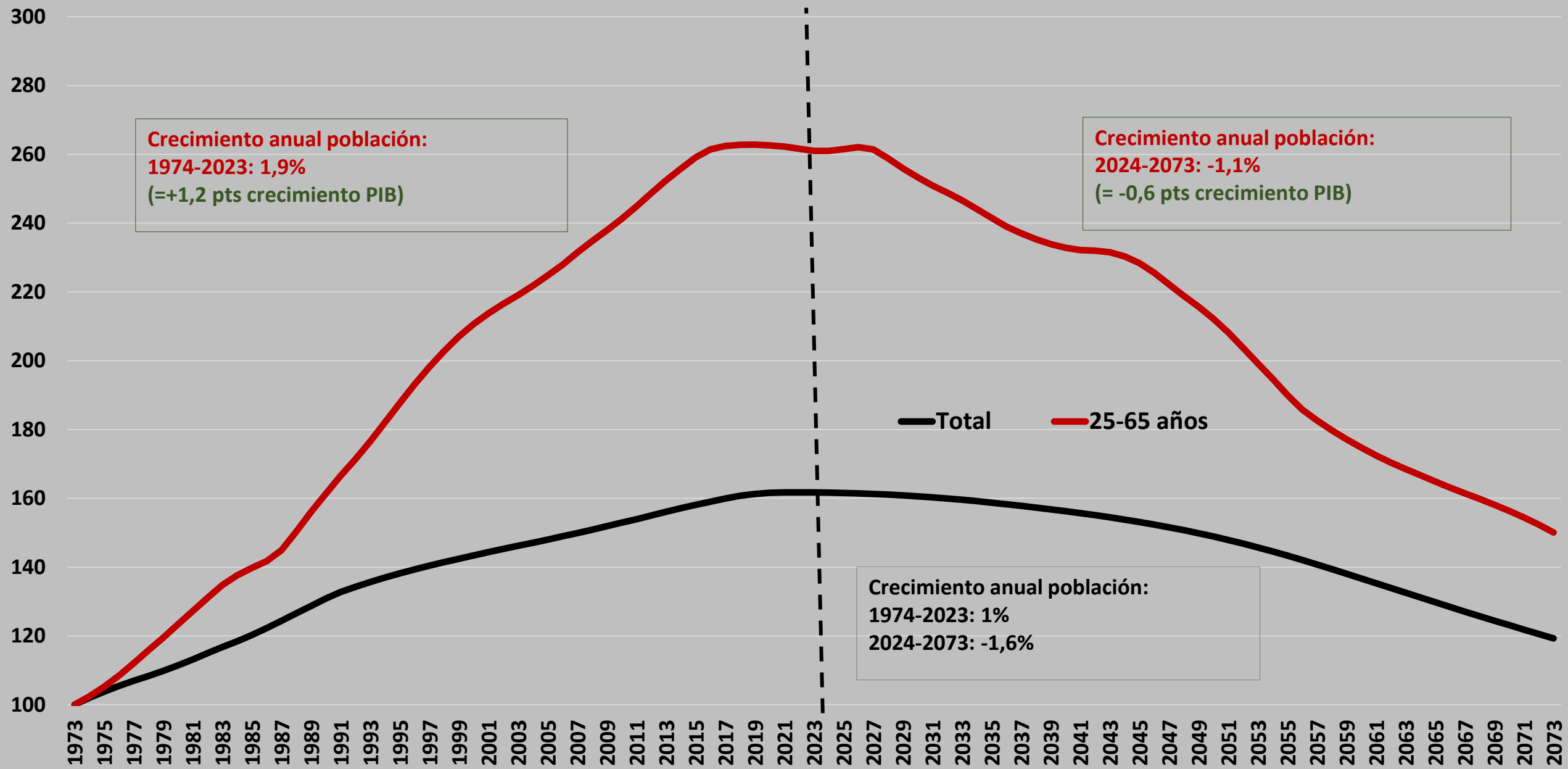
Fuente: National Bureau of Statistics of the People's Republic of China

China: deuda publica bruta y déficit estructural (%PIB)

Fuente: IMF, WEO

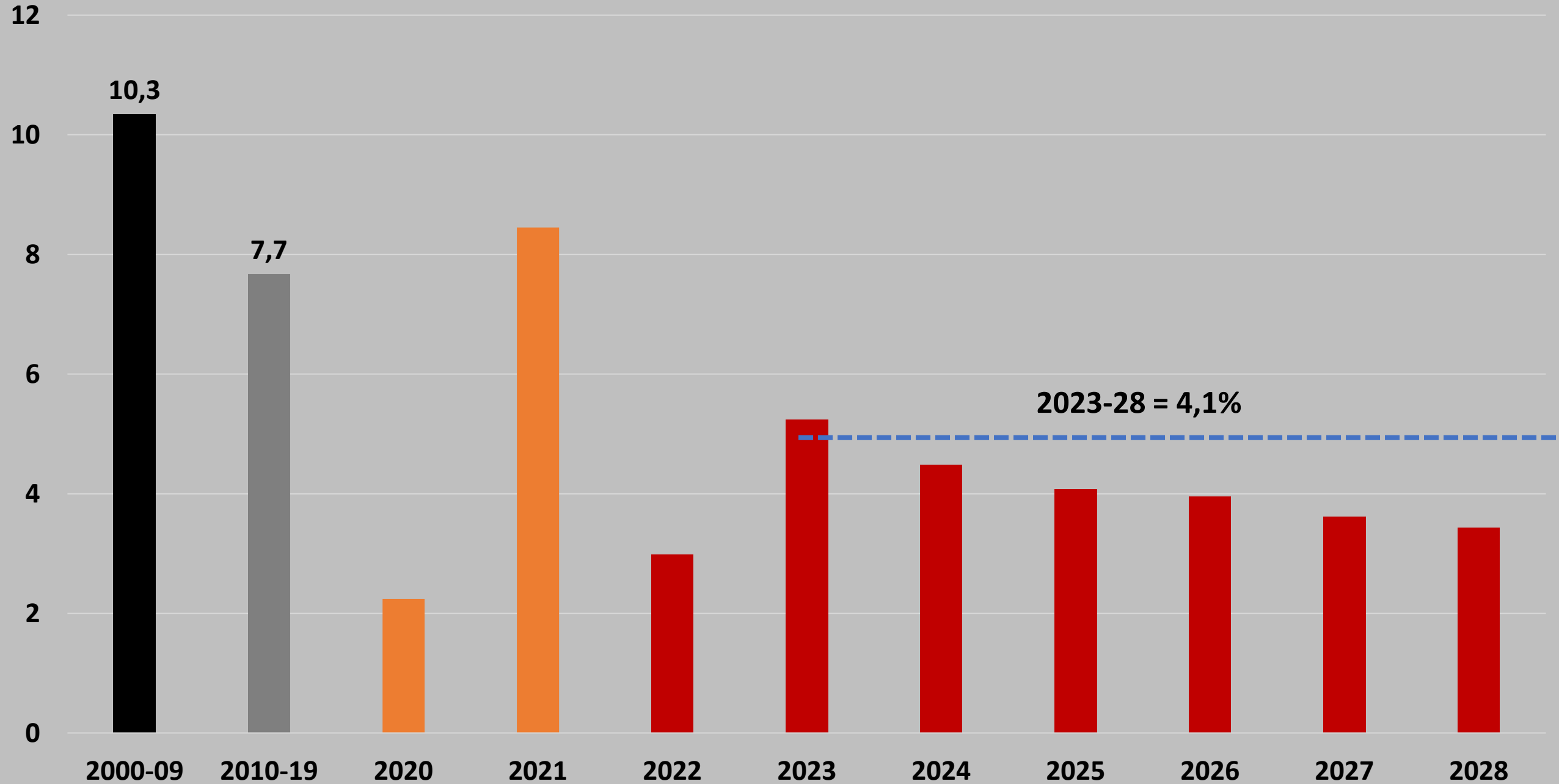


FIN DEL BONO DEMOGRAFICO: Población China 1973-2073 (1973=100)

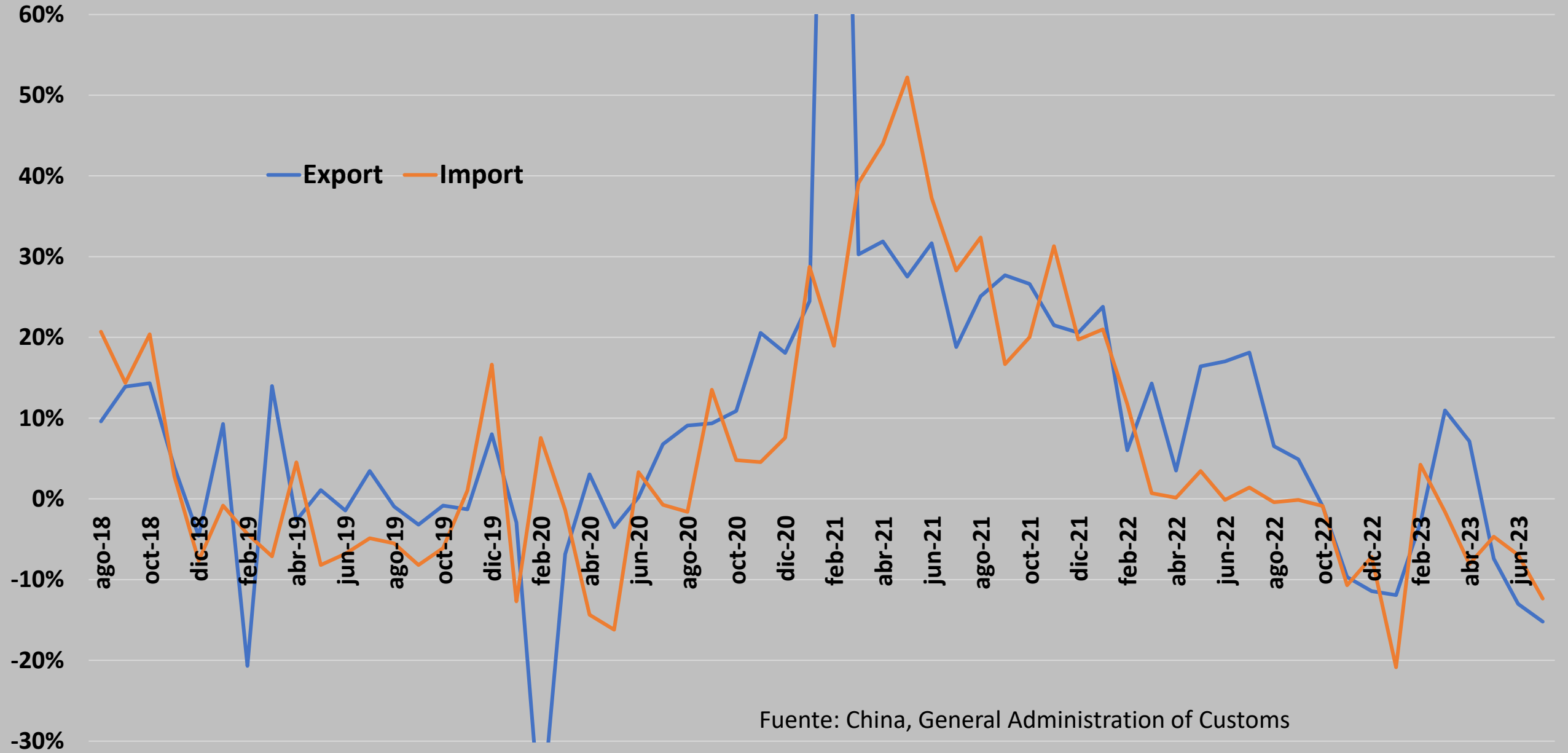


China: crecimiento PIB (%)

Fuente: IMF, WEO



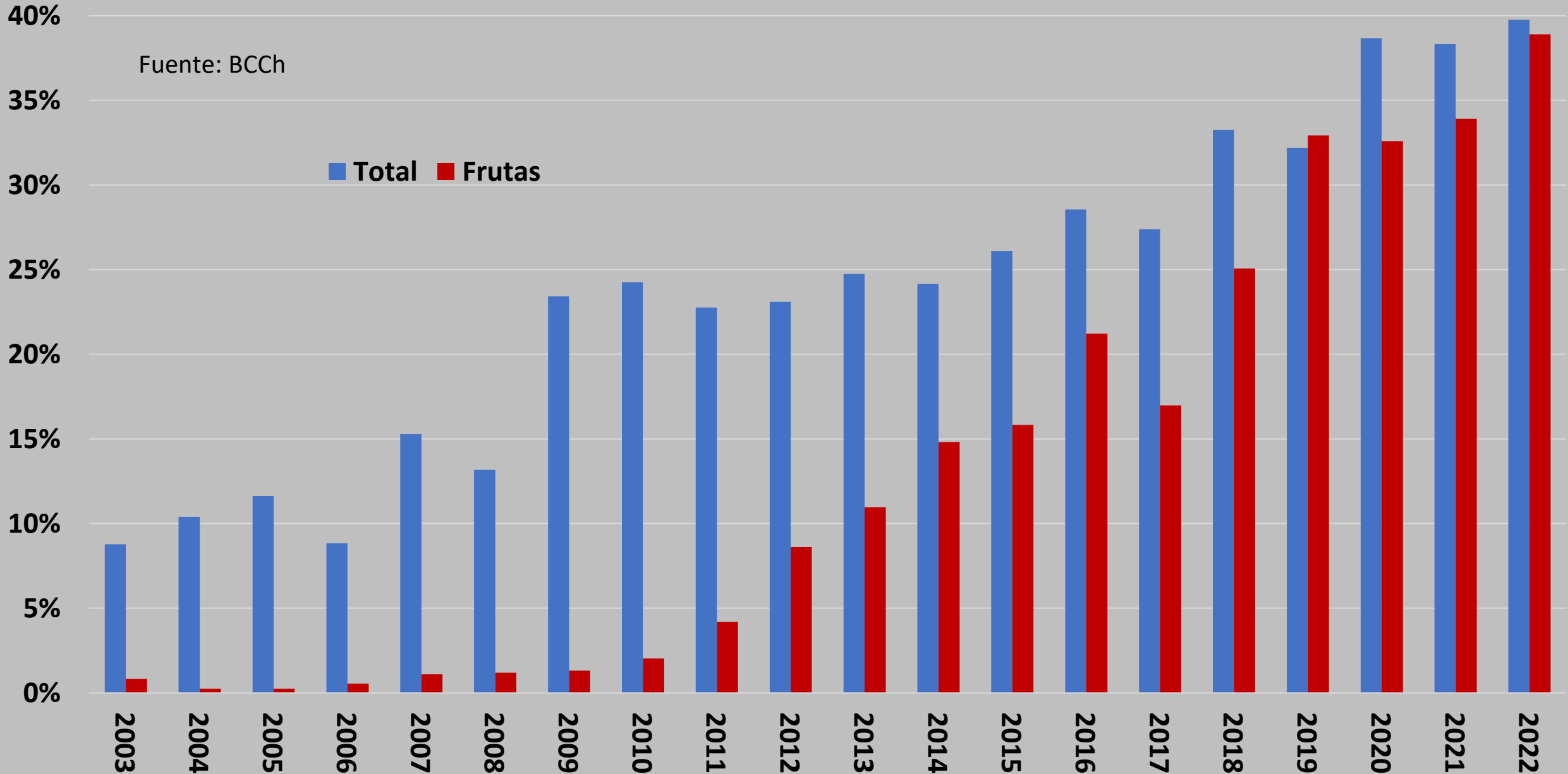
China: Variación anual valor exportaciones e importaciones (%)



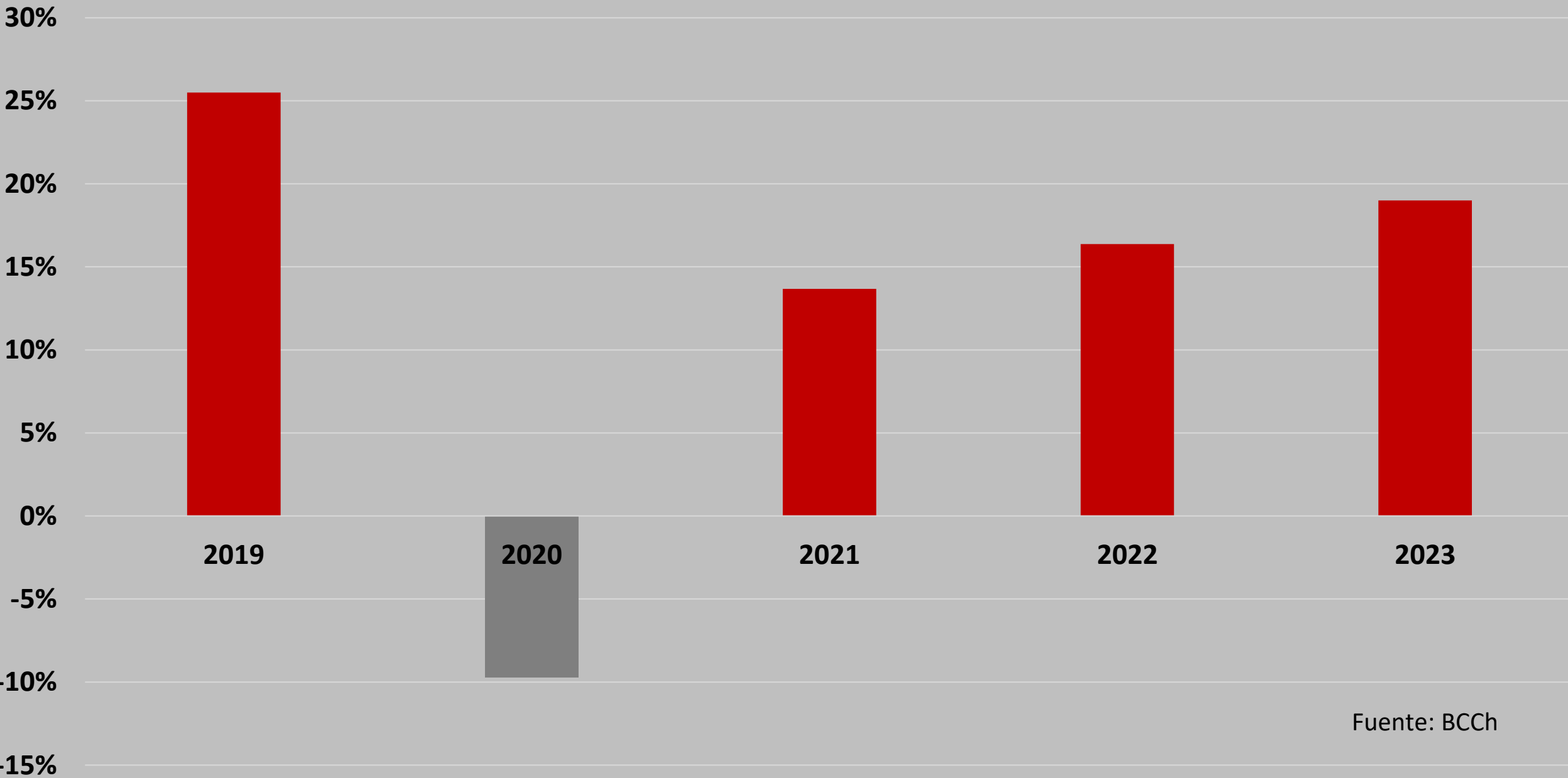
Fuente: China, General Administration of Customs

Participación de China en exportaciones chilenas totales y frutícolas (%)

Fuente: BCCh



crecimiento exportaciones frutícolas a China 1er sem (var. anual, %)



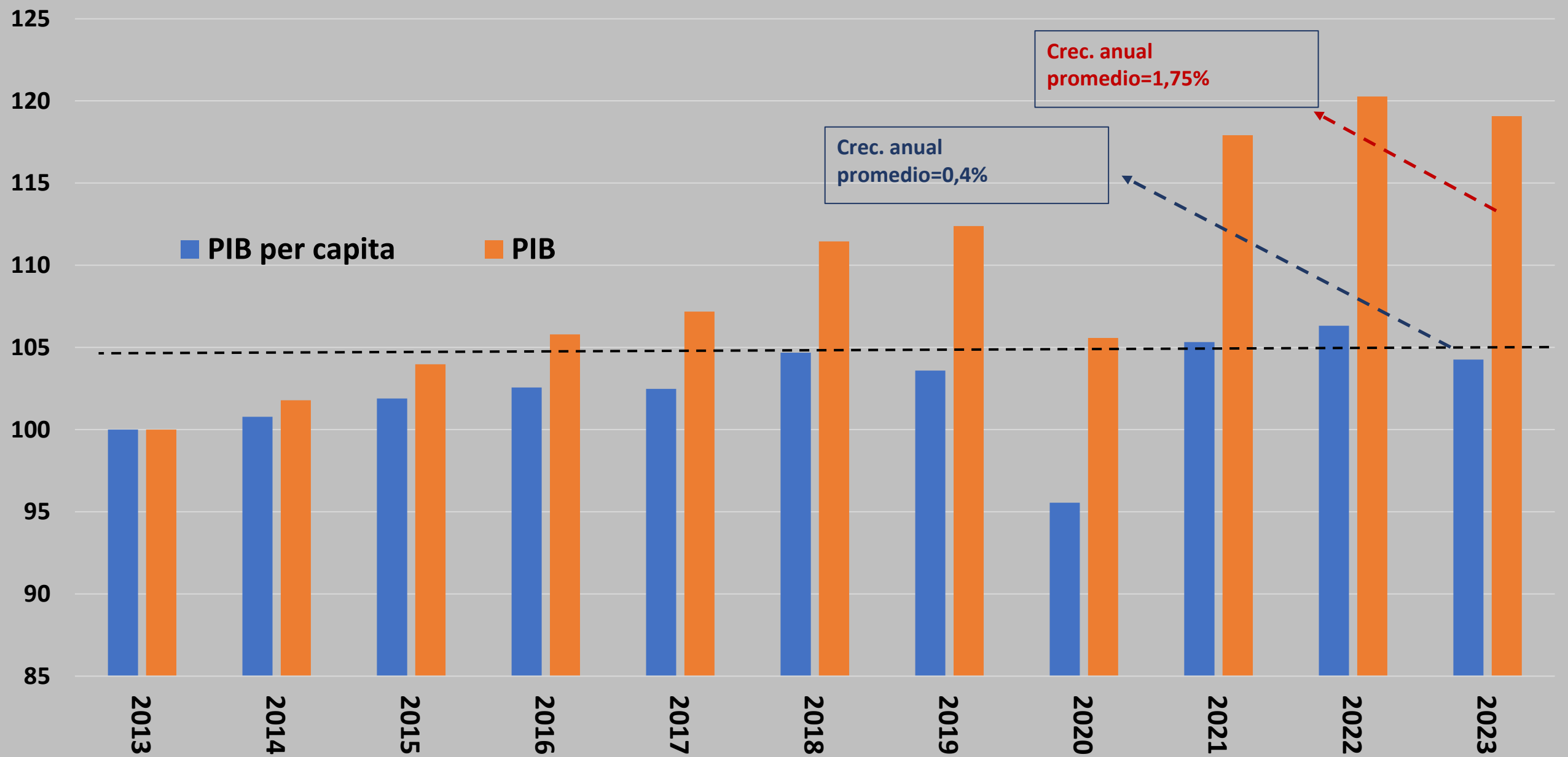
Fuente: BCCh

A large, moss-covered tree trunk in a forest. The tree trunk is the central focus, showing a thick, textured bark with patches of green moss. The background is a dense forest with many other trees and green foliage. A hiker is visible in the lower right corner, providing a sense of scale to the massive tree.

3- ¿Chile en la trampa de los países de ingreso medio? Una mirada al futuro

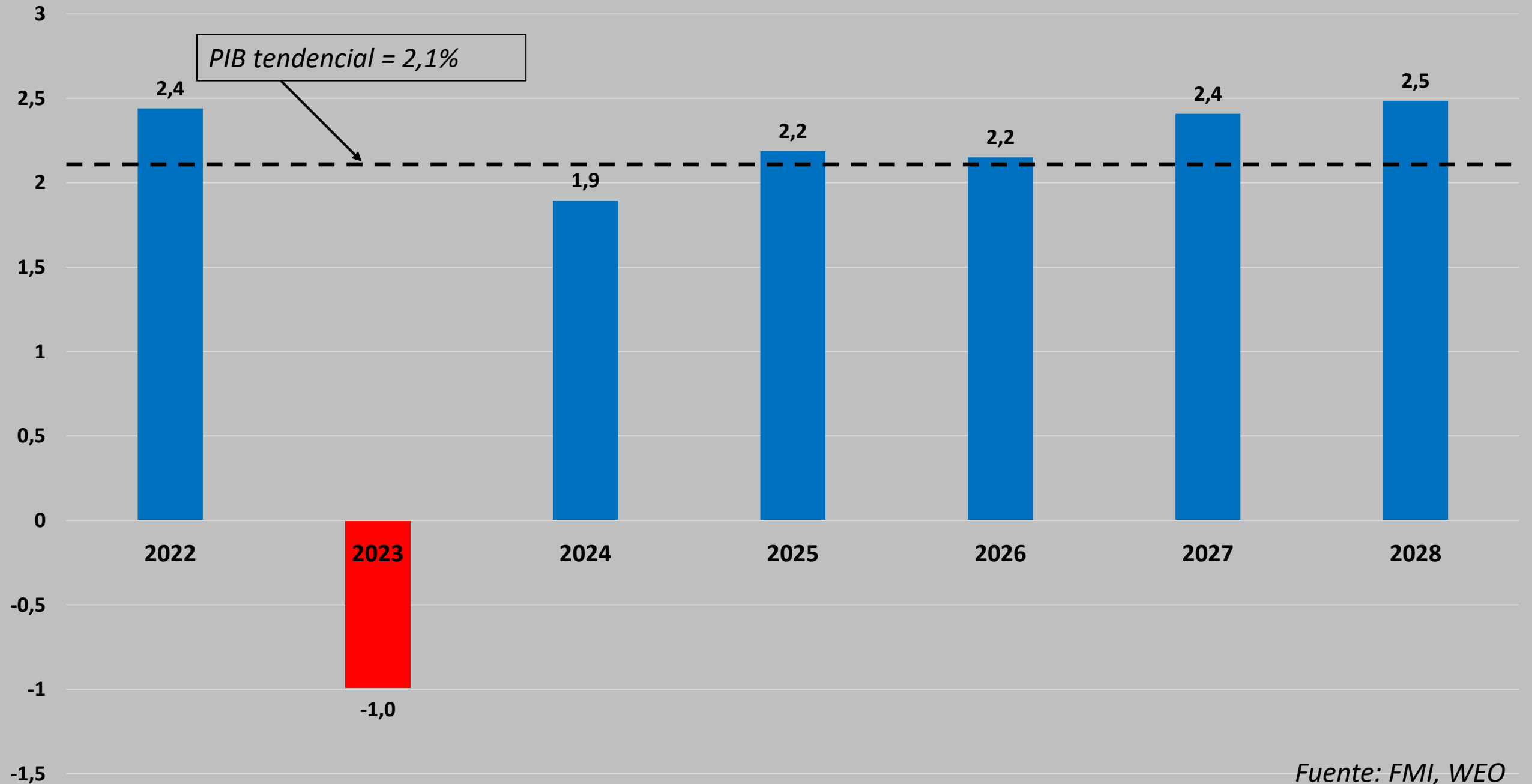


PIB y PIB pc Chile (2013=100)



Fuente: Elaboración propia en base a IMF, WEO

Crecimiento proyectado PIB





**Chile en medio de una
transformación energética
global histórica**

Nuevo momento minero



Nuevo momento minero



An aerial photograph of a desalination plant. The image shows a large circular tank filled with dark green water in the lower-left quadrant. To its right are several large industrial buildings with bright blue roofs. Further right, there are rows of smaller blue-roofed structures, possibly storage tanks or processing units. The plant is situated on a sandy, rocky coastline with waves crashing against the shore on the left side. A road or path is visible on the right side of the facility.

Inversiones en desalinización

Capacidad renovable es
+80 veces nuestra
capacidad instalada



Concentrated solar



Photovoltaic



Wind



Hydro

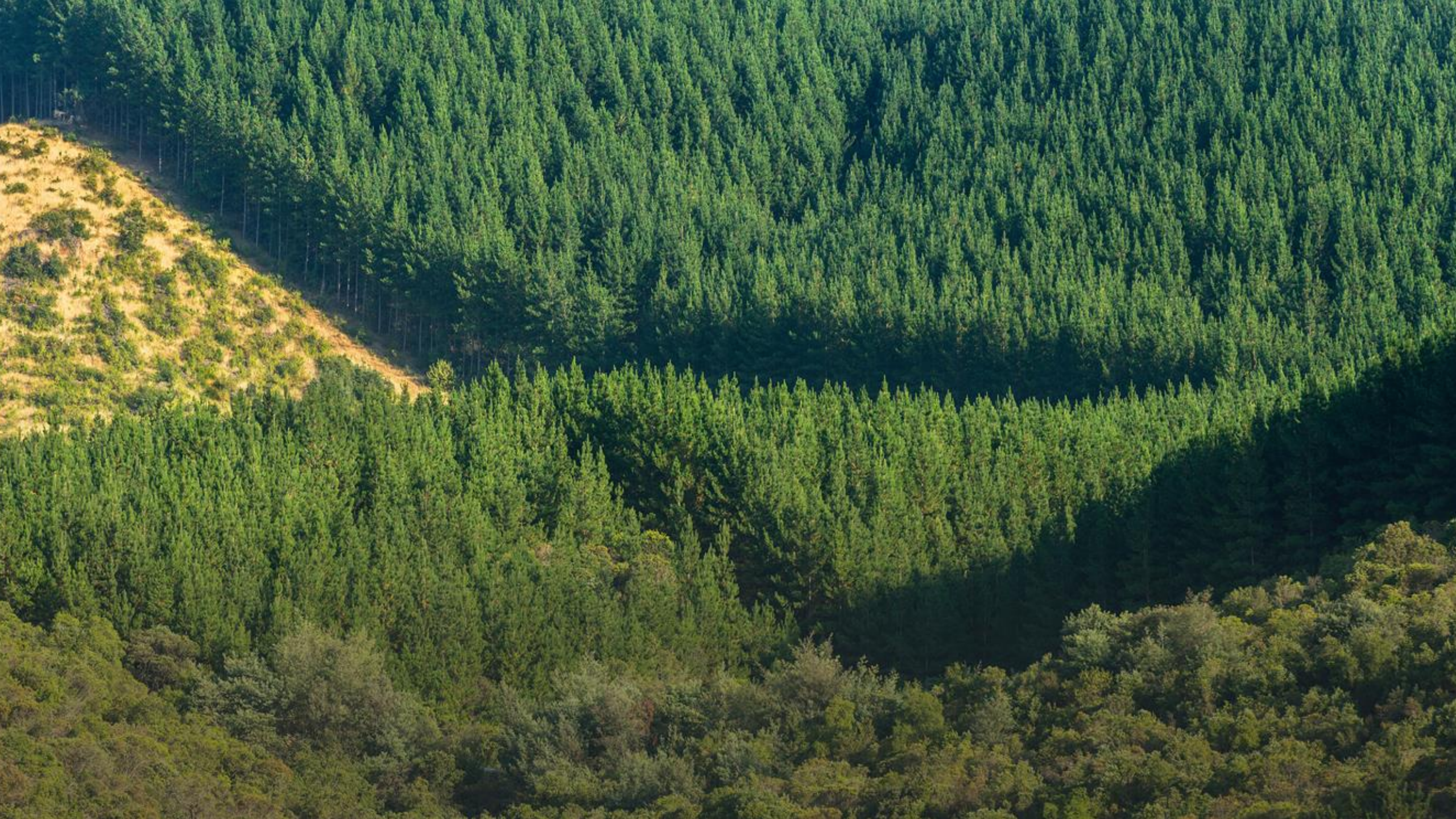


Gobierno
de Chile

gob.cl

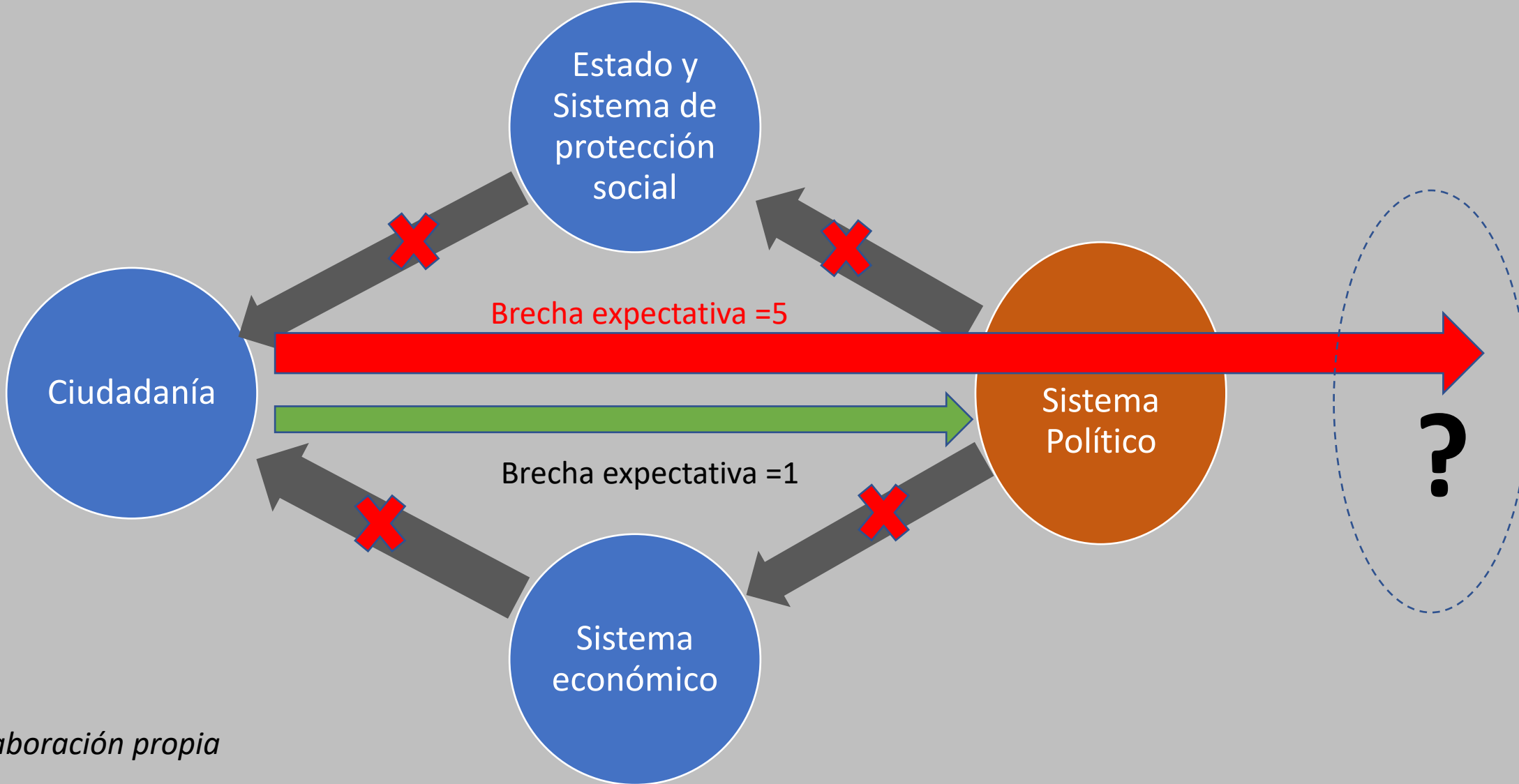
NATIONAL **GREEN HYDROGEN** STRATEGY

Chile, a clean energy provider for a carbon neutral planet






El problema central de cara al desarrollo



Fuente: Elaboración propia

Gobernabilidad



An aerial photograph of a city, likely Santiago, Chile, showing a large white neoclassical building (the Chilean Congress) in the foreground. The building is surrounded by a paved plaza with several Chilean flags on tall poles. In the background, there are numerous high-rise buildings and a clear blue sky. A semi-transparent white box is overlaid on the center of the image, containing the text.

Reforma Estado (recursos humanos)

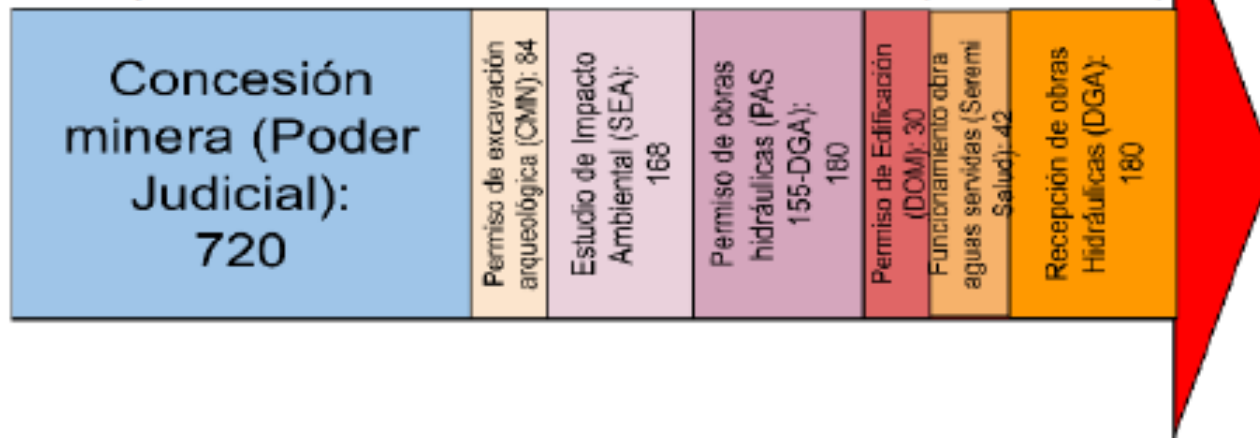
Ruta crítica de un proyecto minero

Proyecto minero

Tiempo real: 3.857 días corridos (129 meses)



Tiempo Normativo: 1.404 días corridos (47 meses)

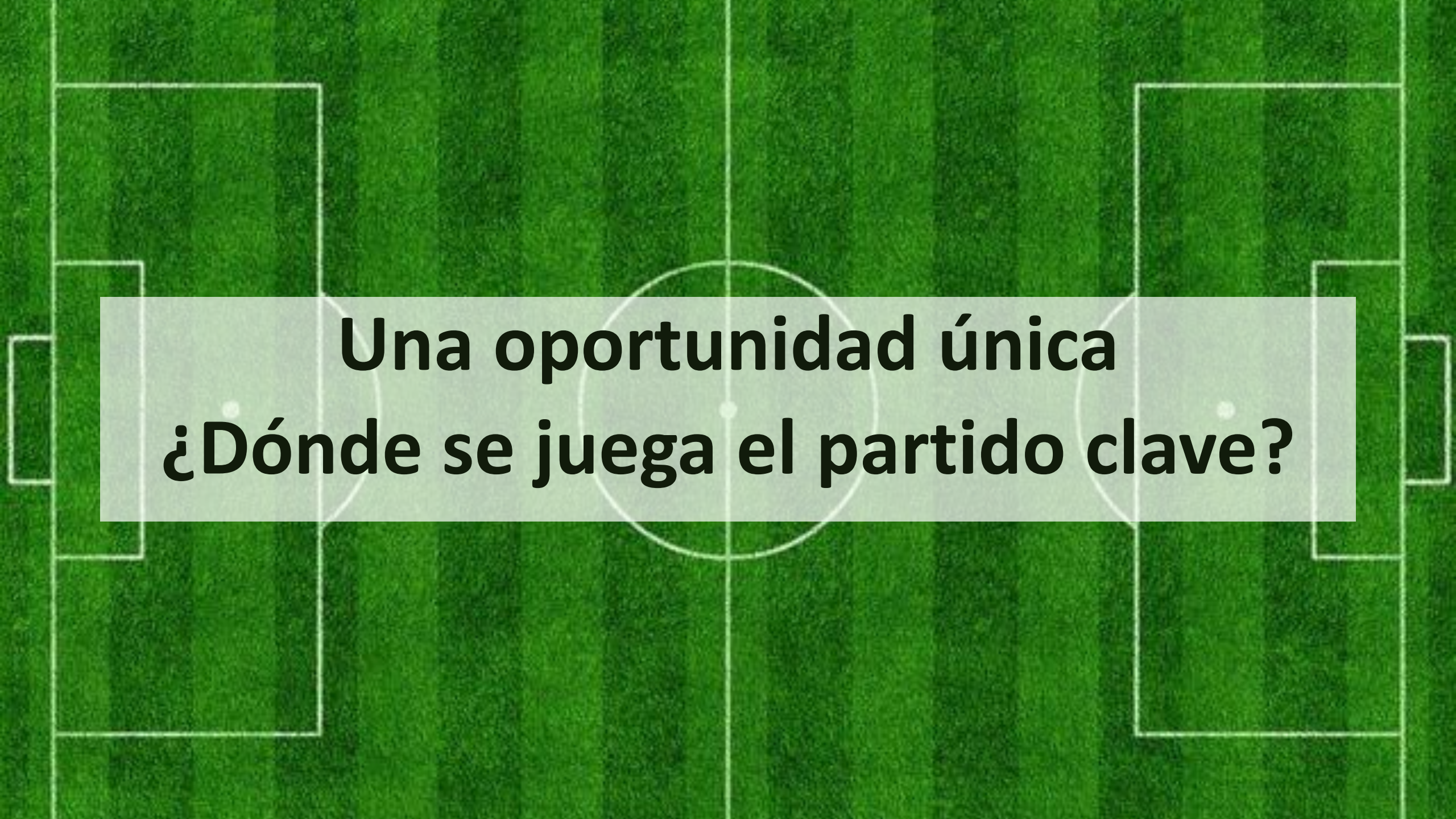


Otros ejemplos:

Planta fotovoltaica= 50 meses

Desaladora= 139 meses

Fuente: CNP, 2023



Una oportunidad única
¿Dónde se juega el partido clave?

JOSÉ MIGUEL INSULZA SALINAS
SENADOR

REPÚBLICA DE CHILE

CONSTITUCIÓN
POLÍTICA
DE LA
REPÚBLICA



EDITORIAL
JURÍDICA
DE CHILE





A person wearing a bright yellow raincoat is seen from behind, looking out over a scenic landscape. The landscape features a winding asphalt road that curves through a hilly area with sparse green vegetation and patches of brown earth. The sky is overcast and grey. The person is standing on a rocky or dirt path in the foreground.

Chile y sus perspectivas económicas: ¿Cómo salir de la trampa del ingreso medio?

Fedefruta, 23 agosto de 2023

Ignacio Briones. UAI, Horizontal y Ex Ministro de Hacienda